

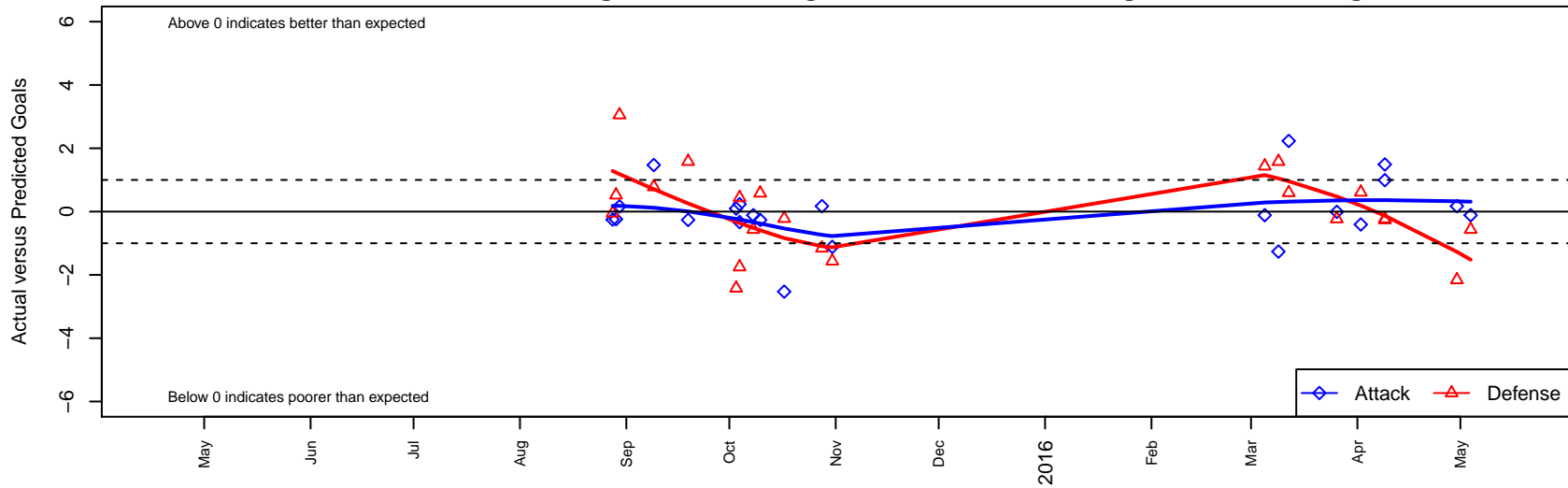
Idaho Rush Black G03

Idaho Rush SC
 Boise, ID
 G03 total strength=915
 attack=2.09 defense=1.06
 fall league = Idaho D3 U12 North U12
 spr league = Spr Idaho D3 U12 North U12
 notes= Frick 2014

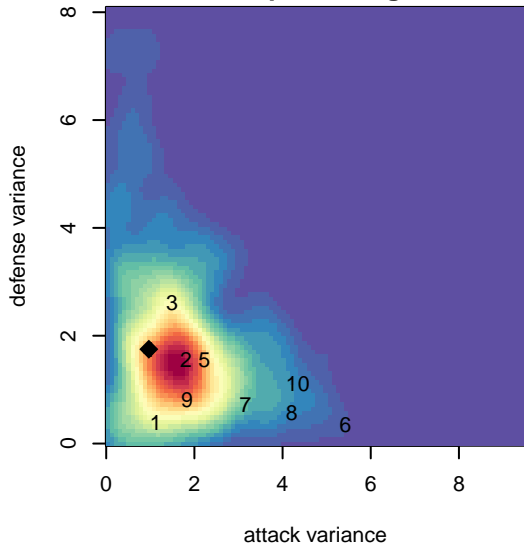
alt names used:
 IDAHO RUSH BLACK (ID)
 IDAHO RUSH BLACK
 IDAHO RUSH BLACK

Venues played:
 2015 NWCL U12 U12
 2015 Idaho D3 U12 North U12
 2015 Spr Idaho D3 U12 North U12

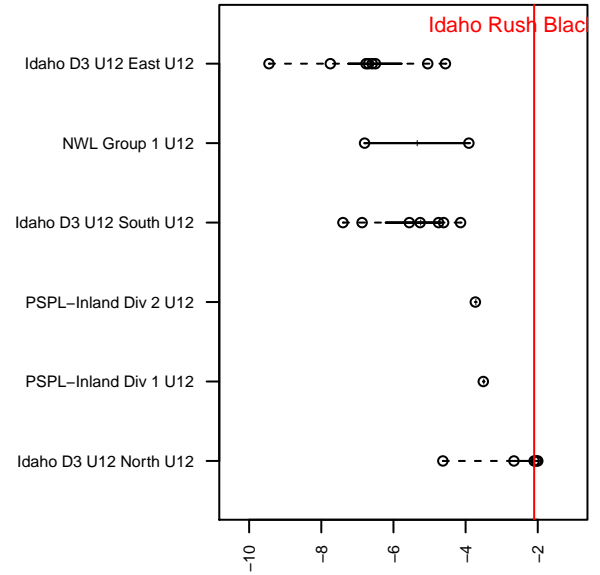
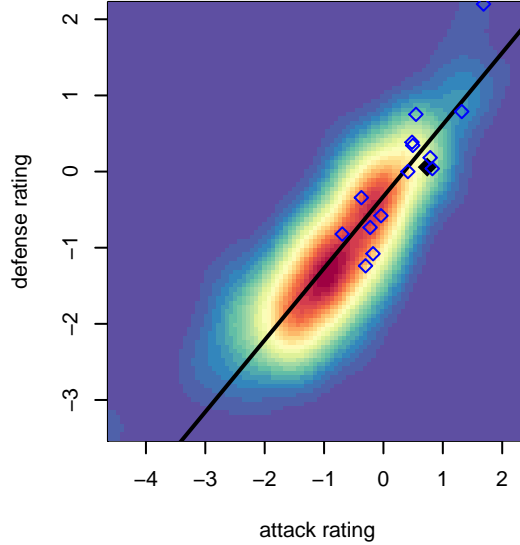
Idaho Rush Black G03
 Dots are actual minus expected GF (blue circles) and GA (red triangles).
 Blue line is smoothed change in attack strength. Red is smoothed change in defense strength.



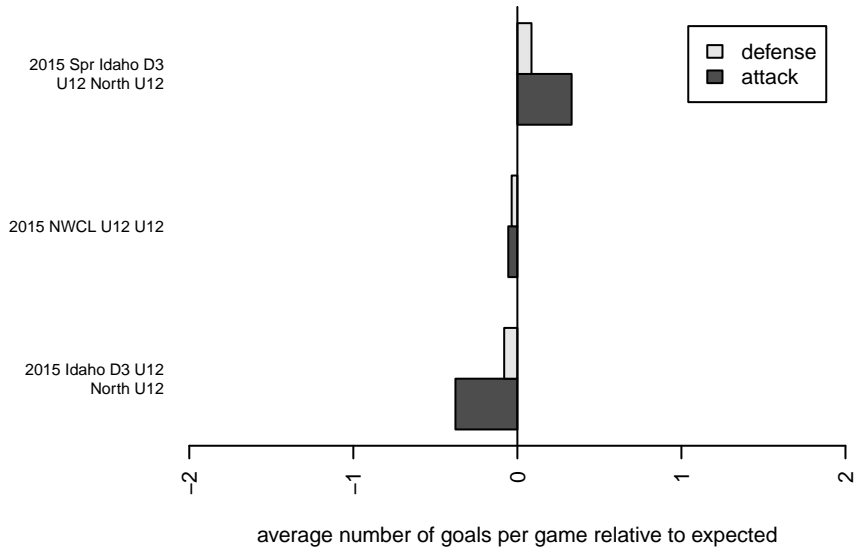
**attack and defense variance (black dot)
relative to other teams
and top 10 in region**



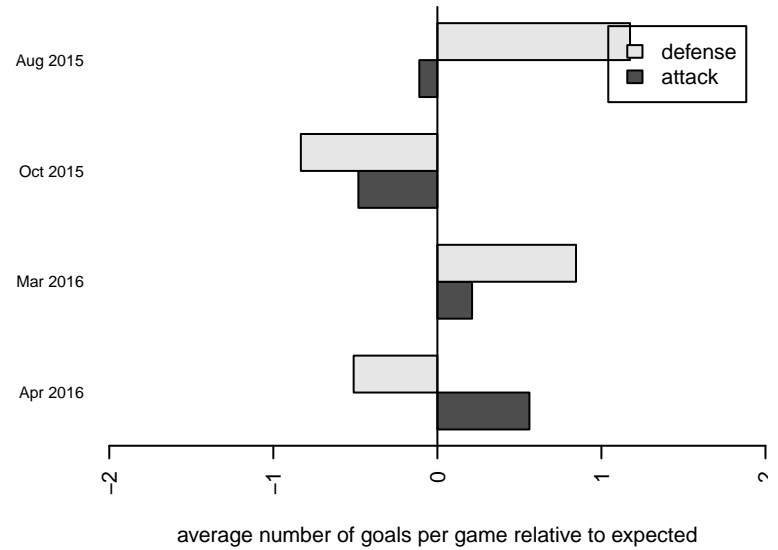
**attack and defense rating
relative to others at age
and all opponents in last 13 months**



Performance relative to 13 month average



Performance relative to 13 month average



| date | home | | away | | venue | pred.home | pred.away |
|-------------|-----------------------|---|------------------------------|---|---------------------------------|------------------|------------------|
| 2016-05-04 | FC Nova Pink NF G03 | 2 | Idaho Rush Black G03 | 2 | 2015 Spr Idaho D3 U12 North U12 | 1.43 | 2.11 |
| 2016-04-30 | Idaho Rush Black G03 | 2 | Indie Chicas Lime G03 | 4 | 2015 Spr Idaho D3 U12 North U12 | 1.83 | 1.84 |
| 2016-04-09 | Idaho Rush Black G03 | 5 | FC Nova Red LR G03 | 1 | 2015 Spr Idaho D3 U12 North U12 | 4.01 | 0.77 |
| 2016-04-09 | Nampa Premier G03 | 1 | Idaho Rush Black G03 | 7 | 2015 Spr Idaho D3 U12 North U12 | 0.74 | 5.51 |
| 2016-04-02 | Idaho Rush Black G03 | 6 | Twin Falls Rapids Blue G03 | 0 | 2015 Spr Idaho D3 U12 North U12 | 6.41 | 0.61 |
| 2016-03-26 | FC Nova Red LR G03 | 1 | Idaho Rush Black G03 | 4 | 2015 Spr Idaho D3 U12 North U12 | 0.77 | 4.01 |
| 2016-03-12 | Idaho Rush Black G03 | 5 | Indie Chicas Cyan G03 | 0 | 2015 Spr Idaho D3 U12 North U12 | 2.77 | 0.60 |
| 2016-03-09 | FC Nova Pink JT G03 | 0 | Idaho Rush Black G03 | 0 | 2015 Spr Idaho D3 U12 North U12 | 1.58 | 1.26 |
| 2016-03-05 | Idaho Rush Black G03 | 2 | FC Nova Pink NF G03 | 0 | 2015 Spr Idaho D3 U12 North U12 | 2.11 | 1.43 |
| 2015-10-31 | FC Nova Pink NF G03 | 3 | Idaho Rush Black G03 | 1 | 2015 Idaho D3 U12 North U12 | 1.43 | 2.11 |
| 2015-10-28 | Indie Chicas Lime G03 | 3 | Idaho Rush Black G03 | 2 | 2015 Idaho D3 U12 North U12 | 1.84 | 1.83 |
| 2015-10-17 | Idaho Rush White G03 | 1 | Idaho Rush Black G03 | 2 | 2015 Idaho D3 U12 North U12 | 0.78 | 4.53 |
| 2015-10-10 | FC Nova Pink JT G03 | 1 | Idaho Rush Black G03 | 1 | 2015 Idaho D3 U12 North U12 | 1.58 | 1.26 |
| 2015-10-08 | Idaho Rush Black G03 | 2 | FC Nova Pink NF G03 | 2 | 2015 Idaho D3 U12 North U12 | 2.11 | 1.43 |
| 2015-10-04 | Idaho Rush Black G03 | 1 | Normandy Park SC Blue G03 | 4 | 2015 NWCL U12 U12 | 1.33 | 2.25 |
| 2015-10-04 | FC Portland Navy G03 | 0 | Idaho Rush Black G03 | 4 | 2015 NWCL U12 U12 | 0.44 | 3.77 |
| 2015-10-03 | Idaho Rush Black G03 | 1 | Westside Timbers Copa TS G03 | 4 | 2015 NWCL U12 U12 | 0.90 | 1.58 |
| 2015-09-19 | Idaho Rush Black G03 | 1 | FC Nova Pink JT G03 | 0 | 2015 Idaho D3 U12 North U12 | 1.26 | 1.58 |
| 2015-09-09 | Idaho Rush Black G03 | 6 | Idaho Rush White G03 | 0 | 2015 Idaho D3 U12 North U12 | 4.53 | 0.78 |
| 2015-08-30 | Idaho Rush Black G03 | 1 | Washington Timbers Red 2 G03 | 0 | 2015 NWCL U12 U12 | 0.84 | 3.05 |
| 2015-08-29 | ASE Emerald G03 | 1 | Idaho Rush Black G03 | 1 | 2015 NWCL U12 U12 | 1.52 | 1.24 |
| 2015-08-28 | Idaho Rush Black G03 | 0 | WPFC A G03 | 5 | 2015 NWCL U12 U12 | 0.25 | 4.95 |